



Contents

touching base 8

Greenham Business Park newsletter - Spring 2018

- 2 New Occupiers
- 3 New Developments
- 4 Services & Amenities
- 5 Business Spotlight - Groomers
- 6 Park User Guide
- 7 Business Spotlight - MSS
- 8 Occupiers' Noticeboard
- 9 Made in West Berkshire
- 10 Availability



Welcome to our new occupiers



Stag Motorcycles

07827 981 520
info@stagmotorcycles.co.uk
<https://stagmotorcycles.co.uk/>
www.facebook.com/StagMotorcycles/

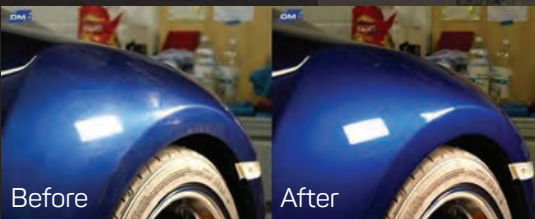


Detail my Car

Vehicle Appearance Specialists. Car detailing to the highest standard. Paint correction & protection. Specialist in new car protection coatings. Vehicle enhancements. Product sales.

Welcome back to Detail my Car, who originally came to The Enterprise Centre at Greenham Business Park, moved to Hambridge Lane, and now return to larger premises in Building 89.

07920 867 771
info@detailmycar.co.uk
<http://www.detailmycar.co.uk> | www.facebook.com/detailmycar





Albury Way, 2001

Albury Way was built in 2001 to facilitate access to the business park from the A339.

The new road, which was cut through the former USAF barrack block site, was named after 2nd Lt. Charles Albury, who died at Greenham while paratroop training for D-Day in December 1944.



USAF barrack blocks, 1960



Albury Way, 2017

A New Security Lodge

Greenham Business Park's new Security Lodge has now been built and will be operating shortly.

The Lodge is situated on the eastern side of Albury Way, the park's western entrance road off the A339.

Albury Way is now the business park's main entrance, and the other entrance road, Main Street, will be closed nightly between 11pm and 4am.

Road Improvements

Our thanks to all drivers on the park for co-operating with the road closures while the new Lodge was being built and Communications Road was being resurfaced.

As part of the business park's continuing road improvement project, the next road to be resurfaced will be Warehouse Road. This work is expected to be completed by spring 2019.

New developments

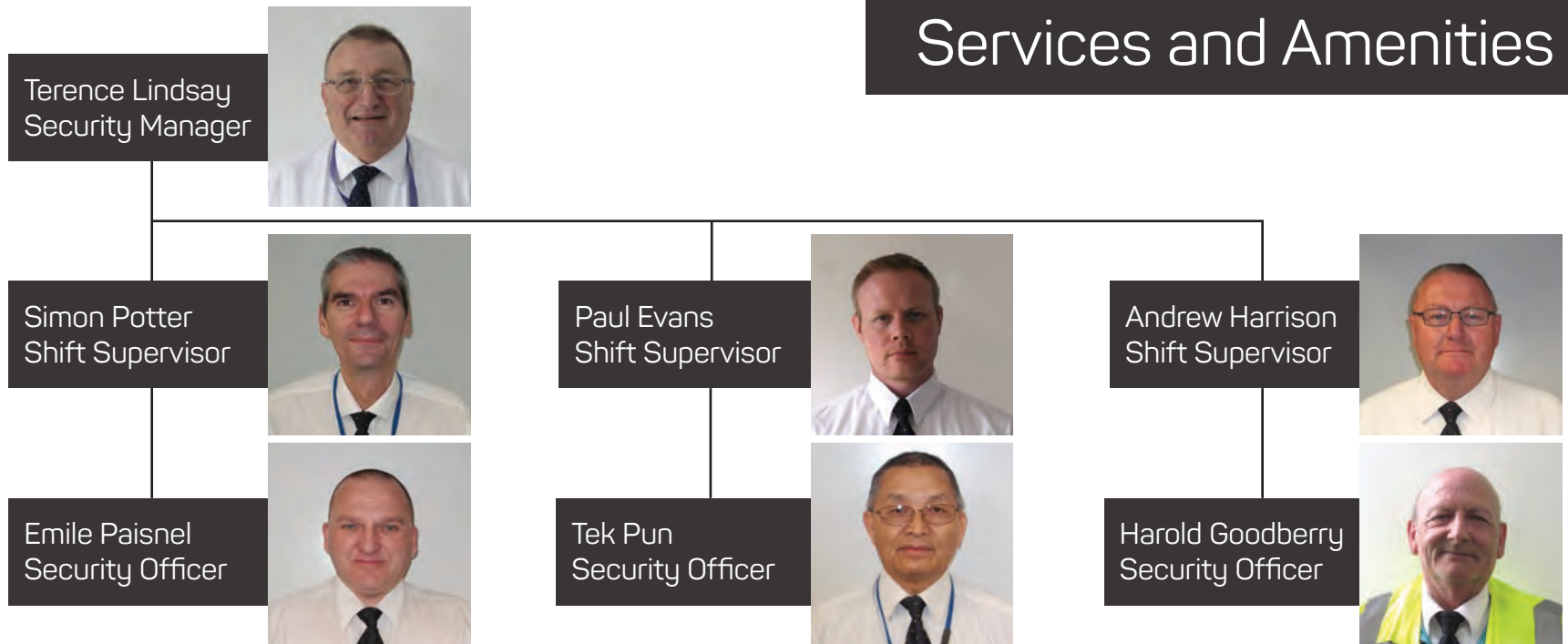
The new lodge seen from Albury Way



Meet your Security Team

Meet your Security Team

Services and Amenities



Always on call - The park's security staff are present on a 24/7 basis, 365 days a year.

Emergency Service - Security staff can provide emergency assistance, with quick-response, certified first aid, including an automatic defibrillator.

Security - As well as making foot and vehicle patrols, security staff also monitor our extensive CCTV system, with cameras strategically located to enable us to track movement. Cameras also record every vehicle that enters or leaves the park.

Information - Our helpful staff also provide information and directions to anyone visiting or working on the park.

Contact - **01635 31942**
greenham.lodge@gmail.com

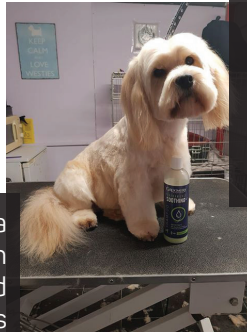
Best in Breed at Crufts 2018,
coat care by Groomers



A range of shampoos,
including the new
Choca-Doodle range
for poodle crossbreeds



Soothing Aloe & Jojoba
shampoo for dogs with
sensitive skin and
flaky and dry coats



Business Spotlight

GROOMERS[®]

the professionals choice

Keep your dog in championship condition

Groomers Limited has grown from a small manufacturer of Evening Primrose Oil dog shampoo to an international market leader in the professional pet grooming industry. The company uniquely produces a large variety of bathing and coat care products for dogs and cats. They are always working to develop exciting new products, like the Choca-Doodle bathing range, designed especially for Poodle crossbreeds. Groomers also sources professional pet grooming supplies including salon equipment, brushes, dematting tools, clippers and grooming scissors.

Groomers has been a Greenham Business Park occupier since 1999, expanding from less than 2,000 sq ft to its present 22,000 sq ft, and growing its staff from 5 to almost 40! The company continues to grow year on year, bringing a wide range of innovative products to the pet grooming industry and pet owners alike.

Groomers products can be purchased on www.groomers-online.com, Amazon, and E-Bay.

www.groomers-online.com

the local area

Shuttlebus routes
Bus Station

Road

Andover	18.9 miles	28 mins
Basingstoke	12.4 miles	18 mins
Hungerford	16.8 miles	23 mins
London	57 miles	1 1/2 hours
Newbury	3.9 miles	9 mins
Reading	32.3 miles	37 mins
Southampton	37.9 miles	45 mins
Swindon	32 miles	43 mins
Thatcham	4.8 miles	13 mins
Winchester	26.4 miles	32 mins

Airports

Southampton 50/18 21k
 • By road: 42 mins
 Distance: 37.2 miles
 • By rail: 90 mins - 120 mins

Heathrow 116 10k
 • By road: 1 hour
 Distance: 44 miles
 • By rail: 100 mins - 120 mins

Gatwick 81k 04P
 • By road: 1 1/2 hours
 Distance: 73.8 miles
 • By rail: 120 mins - 150 mins

103 Shuttlebus

The subsidised park shuttlebus travels to and from Newbury every hour during working hours, Monday to Friday.

Greenham Business Park	Newbury College	Newbury Bus station
07:00	07:14	07:27
08:00	08:14	08:27
09:00	09:14	09:27
10:00	10:14	10:27
11:00	11:14	11:27
12:00	12:14	12:27
13:00	13:14	13:27
14:00	14:14	14:27
15:00	15:14	15:27
16:00	16:14	16:27

All shuttlebus journeys to & from the business park cost £1.

Park times are shown for the Main Street entrance. For bus stops on Greenham Business Park see the park map opposite.

Newbury Bus station	Newbury College	Greenham Business Park
07:30	07:48	07:52
08:30	08:48	08:52
09:30	09:48	09:52
10:30	10:48	10:52
11:30	11:48	11:52
12:30	12:48	12:52
13:30	13:48	13:52
14:30	14:48	14:52
15:30	15:48	15:52
16:30	16:48	16:52

Rail

From Newbury or Thatcham

Times are shown from Newbury Station RC14 5GJ, which is a 20 mins walk from the Bus Station RC14 5DP. You can purchase a single ticket for both shuttlebus and rail travel.

	96 mins - 113 mins
Bristol	96 mins - 113 mins
Hungerford	10 mins - 11 mins
London	58 mins - 78 mins
Reading	45 mins - 75 mins
Southampton	22 mins - 32 mins
Swindon	43 mins - 104 mins
Winchester	88 mins - 111 mins

Places to visit

1 Newbury Racecourse RC14 7HZ
T 01635 40015
<http://www.newburyracecourse.co.uk>

2 Donnington Castle RC14 2LE
<http://www.english-heritage.org.uk/visit/places/donnington-castle>

3 Thatcham Nature Discovery Centre RC19 2JU T 01635 87431
www.thatcham.org.uk/nature-discovery-centre

4 East Berkshire Museum RC14 5AG T 01635 519562
www.eastberkshiresmuseum.org.uk/east-berkshire-museum

Entertainment

1 Cam Exchange RC14 5SD
Box office: 01635 5218 218
www.camexchange.org.uk

2 Vax cinema RC14 5EN
T 0872 240 240
www.vax.com/home/showroom/newbury

3 Westwell Theatre RC20 8AE
Box Office: 01635 46044
www.westwell.org.uk

Sport

1 Newbury & Greenham Golf Course RC19 6EJ T 01635 40015
www.newburygolf.co.uk

2 Lakeside Sportsrow RC19 5AL T 01635 874222

3 Northcott Leisure Centre RC14 3FS T 01635 31919
www.leisurecentre.com/northcott-leisure-centre/facilities

Eating Out

1 The Swan Inn RC20 4EJ
www.theswaninn.co.uk/restaurant/

2 The Swan Inn RC20 9EJ
T 01635 40213

3 The Royal Oak RC20 4LH
T 01635 31933
www.royal-oak-restaurant.co.uk

Accommodation

1 Premier Inn RC14 314
T 0871 822 2325
www.premierinn.com

2 Travelodge Hotel, 5th Hill RC20 9EX
Travelodge Hotel, Newbury RC14 1JH
T 0871 564 6267 / 0871 564 6473
www.travelodge.co.uk

3 Travelodge Valley Hotel RC14 5AG
T 01635 55199
www.dorvngtravelodge.co.uk

Contact Us

Greenham Business Park Ltd
01635 817444
enquiries@greenham-business-park.co.uk

Liberty House, Greenham Business Park
Thatcham, Berkshire RG18 6RF
www.greenham-business-park.co.uk

amenities

Greenham Business Park

Business support

A comprehensive range of admin support for businesses can be accessed at Liberty House, The Enterprise Centre.

Ask us about:

- Serviced offices
- Conference and meeting facilities
- Call answering
- Postal and courier services
- Photocopying and printing
- Business catering

01635 817444
enquiries@greenham-business-park.co.uk

Security

Peace of mind for anyone working on the park or just visiting at the weekend.

The park's security staff are present on a 24/7 basis, 365 days a year, offering not only security but also information and emergency assistance, with quick-response, certified first aid, including an automatic defibrillator.

T 01635 31942
E greenham.lodge@gmail.com

In an emergency call 01635 580801

Eating

The Coffee Exchange

- Call and order bar
- Working buffets & lunches available
- Tea, coffee, milk, biscuits, sugar and newspapers on sale

T 01635 51255

Childcare

Woodlands Day Nursery

Weekday childcare for children from 3 months to 5 years, with nutritional meals and fun activities for all ages including sports, dance, French, gardening and art & crafts.

Discounts are available on a sliding scale for children of parents working on the park.

T 01635 33426
W www.woodlandschildcare.co.uk
E enquiries@woodlandschildcare.co.uk

National Needlework Archive

An archive of the nation's community needlework.

- Museum
- Exhibition and tea area
- Archive and lending library
- Needlework supplies shop

T 01635 38740
W www.nationalneedleworkarchive.org.uk

The Base - New for 2018

A new £1.7m cafe, wood art gallery and restaurant will open late in 2018, replacing the ageing, prefabricated New Greenham 4th building, now unable to cope with modern demands.

With easy parking, easy access from all corners of the park, and an attractive and spacious sitting area, The Base will be popular with both businesses and walkers on the park.

Greenham Common

The business park is surrounded on three sides by Greenham Common - a nature lover's paradise:

- 750 acres of lowland heath
- Home to many rare and endangered species
- Ideal for walking or cycling

Newbury Parkrun

- Every Saturday of the year
- Parking at Greenham Control Tower
- Run 5K round Greenham Common
- FREE - just turn up

www.parkrun.org.uk/newbury

The War Memorial

A tripart memorial for the US servicemen who died in two separate flying accidents at Greenham Common in 1944, and to all US servicemen who gave their lives for freedom.

A service is held at the Memorial every year on 12th December by the Newbury Branch of the Royal British Legion.

The Peace Garden

Dedicated to, and named by the Greenham Peace Women, whose protests against nuclear weapons caught the world's attention during the 1980s, the Peace Garden is on the site of one of the former peace camps.

Now the perfect place for a picnic.

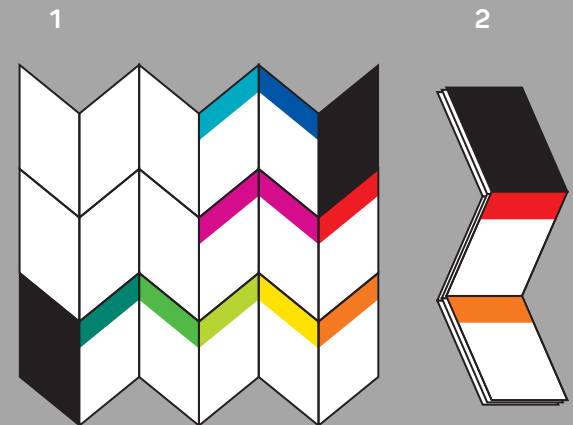
Simply print the guide at A3 size and fold according to the instructions for a handy pocket-sized copy.

Park User Guide

The 2018 Amenities Guide for Greenham Business Park can be downloaded here:

www.greenham-business-park.co.uk/sites/default/files/pdf/Greenham-Business-Park-Amenities-Guide-2018_0.pdf

The guide features handy information about travel, accommodation, eating out and a whole range of things to do and see, both on and near the park - ideal for workers and visitors.





MSS Safety (Motorsport Safety Solutions Ltd) provides safety, fire, medical & rescue support for the media, sports, events and entertainment industries globally. MSS's teams have worked across 62 countries on some of the biggest movies, TV shows and events in the world.

MSS provided a Production Safety Supervisor, fire safety support, Unit Medic & paramedic ambulance cover, height safety teams and safety equipment for stunts in *Mission Impossible 5*, including the iconic opening plane stunt. Teams also worked on Ron Howard's Formula 1 movie *Rush*, *Fast & Furious 6*, and, more recently, Marvel's *Doctor Strange* and *Mary Poppins* for Disney.

MSS has also provided H&S support to many of the world's Motorsports championships and events. Since 2006 MSS has been the sole provider for the specialist support to BBC TV's *Top Gear* worldwide.

MSS offers a full safety package, from legal compliance to Ambulance and Fire cover, helping making any event, big or small, run smoothly including Greenham Trust's own StepUp4Good event on Greenham Common, Newbury's Crafty Craft Race and Newbury's Annual Remembrance Service.

www.stuntsafety.tv

www.facebook.com/MSSSafetyWorldwide

Business Spotlight



Stunt Safety for Tom Cruise



Stunt Safety for Fast & Furious 6

On location for F1 action
in Ron Howard's *Rush*



On location for
Top Gear in Africa



Safety Adviser/Medic,
Madagascar



Supporting a stunt
in the Swiss Alps



Medical and Rescue Team, Morocco

OCCUPIERS' NOTICEBOARD

email touchingbase@greenham-business-park.co.uk to put your news here



Newbury 10K



Market Place, Newbury, Berkshire
Sunday 27th May 2018

- 9:10am **0.9K run** for 5-11 years
- 9:20am **1.5K run** for under 16s
- 10:00am **Roc Newbury 10K**

Medals and Goody Bags for all Finishers

enter now

at www.newburyac.org.uk/road-running/newbury10k

(entries close 22nd May)

Run for fun or fundraise for a good cause on www.thegoodexchange.com

On race day, the areas within the bollards in the town centre will be closed to traffic from 08:30am. There may be a short wait for access to some properties on the 10K course from 10am and we appreciate the patience of householders on the route. The race leaves the town for Speen via West Street and Strawberry Hill and returns via Northcroft. It then uses the canal tow path though West Mills and returns via Craven Road to Market Place. Route details at: www.newburyac.org.uk/road-running/newbury10k.

2018-30320



all profits
in support of



Share your
NEWS, SERVICES,
JOBS and DISCOUNTS
with other park occupiers
HERE



good for
business

The Thames Valley Chamber of Commerce has launched 'Made in West Berkshire', a new project to showcase the success of local, regional and international businesses based or founded in West Berkshire.

With such a diverse range of exciting, innovative and entrepreneurial organisations in the area, the Chamber is taking the lead on sharing and celebrating the success stories of businesses founded or operating in West Berkshire. The aim is to increase the profile and awareness of your business. You can join the project on their website.



local engagement
regional representation
global opportunity

Availability



Liberty House & Venture West,
Greenham Business Park

Serviced offices from 121 sq ft to 543 sq ft and
workshop units of 248sq ft available on easy-in,
easy-out terms.

contact us

01635 817444

mitch@greenham-business-park.co.uk

Development plots, Greenham Business Park

Plots are available for design and build opportunities
- create your ideal workspace.



The Turnpike Industrial Estate, north Newbury

Completely refurbished industrial units with new windows, doors, roof
lights, sanitary ware and office blocks, redecorated and painted
throughout, with all floors painted with durable industrial sealant paint.
All units have gas, water and electricity. 2 units are available, of
2,762 sq ft and 3,945 sq ft.