

Page 2

Park Updates

Page 3

Sovereign Housing Association

Page 4

Plastic Free Communities

Page 5

Business Spotlight – Venue VR

Page 6

Greenham Trust

Page 7

The Base

Page 8

A34 Connect

Page 9

Plot 92





Redevelopment and New Development

Greenham Trust continues to modernise and improve the quality of commercial property across the business park. We are happy to work with existing tenants or new tenants in order to create high quality accommodation that fulfils specific business needs.

We continue with our program of redevelopment. This includes demolishing some buildings that are at the end of their economic life. In part, this is driven by legislation around Energy Performance Certification, but also by The Trust's desire to create modern, purpose-built buildings for our tenants. A few buildings are due to be demolished between now and the autumn. The next phase of development will create new workplaces that provide a great working environment for tenants and their employees.

Electricity Distribution Network Maintenance

The full intrusive maintenance of the network is due this year. Unfortunately, this will involve temporary loss of power to each building on the business park. Individual occupiers will be notified of the date and approximate timescale for the power being off in due course. In the meantime, if you have any questions please contact mitch.thomas@greenhambusinesspark.co.uk.

Utility Costs

The business park is not immune from the global rise in energy bills and, unfortunately, this is likely to impact our electricity rates from April 2023. Please be assured we are working hard with our broker to minimise the increase and explore alternative greener options to procure energy. We continue to strive to keep occupation costs as low as possible to deliver value for money to our tenants.

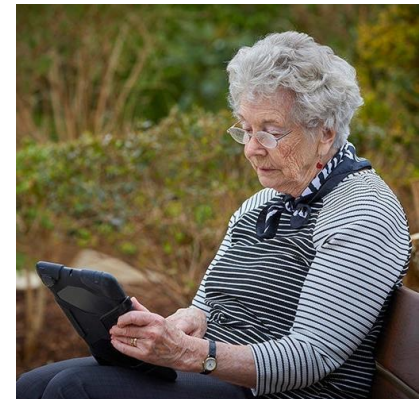


Sovereign Housing Association are celebrating the move into a new 28,000 sqft, three-storey building which will become home to over 500 of their front-line operational teams who cover Hampshire, Berkshire and Oxfordshire.

The move is part of Sovereign's Workplace programme, which is consolidating circa 22 outdated offices into a reduced number of modern workplaces to better support Sovereign's aim of providing a great working environment for employees. The site also has a large training academy, to support Sovereign's commitment to employees now and in the future.

Sovereign's Workplace programme is central to improving the customer experience and moving customer engagement online, through the 'MySovereign' app and over the telephone.

The new office at the business park also supports Sovereign's social purpose, as surplus income from the park is used to fund charitable purposes in the local area, via our owner, Greenham Trust.



Plastic Free Communities

Greenham Business Park is pleased to have joined the Plastic Free Community Network, tackling single use plastic and working towards Newbury and Thatcham achieving plastic free accreditation.

The venture was set up by Surfers Against Sewage (www.sas.org.uk) and the local scheme is run by the West Berkshire Sustainability Community. The main focus is removing single use plastic - not all plastic.

Plastic pollution has sadly become synonymous with outdoor activity and is an issue that connects the environment with all parts of society. It is something we can all take action on at every level.

Ridding the natural world of single use plastic is not just about cleaning up the environment, it is about protecting it for future generations as 99% of plastic is fossil fuel derived and carbon emissions from plastic production are set to more than triple by 2050.



Greenham Business Park has signed the Plastic Free Pledge and is committed to supporting the plastic free community.

Small independent businesses (up to 3 branch offices) can sign up directly on the plastic free website www.plasticfree.org. By removing 3 or more items of single use plastic you can become a plastic free champion and receive a wooden plaque, certificate, and electronic logo for your website.

If you would like more information, please contact: Jenny Kirby (mrsjennykirby@gmail.com)



VENUE VR NEXT LEVEL GAMING

Venue VR, based at the business park, is Newbury's very own VR entertainment centre. We pride ourselves on being the home of motion with our rollercoaster, space, and racing simulators.

Step into the action with our VR treadmills that allow you to really walk in VR with next-gen haptic vests for a fully immersive experience.

There are so many games and experiences to choose from in our VR pods with great headsets and giant screens on which to watch all the action.

The perfect place to try out the latest in VR for any occasion, for kids, teenagers and the young at heart!

We run 60 or 90 minute sessions or complete party packages with food included. VR sessions starting from only £15.

Open for pre-booked sessions only available weekday lunchtimes, evenings, and all day at weekends. Extended opening hours during the school holidays.

Visit <https://www.v-vr.co.uk/> or contact us on bookings@v-vr.co.uk



Greenham Trust and The Queen's Green Canopy

As part of Greenham Trust's 25th anniversary celebrations and in support of The Queen's Green Canopy project, Greenham Trust has committed to supplying up to **25,000 trees** to charitable organisations in West Berkshire and north Hampshire over the next few years. We launched the scheme last Autumn and have already supplied 2,500 trees to 65 different organisations throughout the area.

Plant experts Growing2Gether at nearby Cottismore Park are supporting us in delivering this project. When the order arrives they look after the trees, sort them into individual orders and deliver them to the recipients. This provides a great opportunity for their adults and young people with learning disabilities, physical disabilities or mental health issues to participate in LASER's Learning, Employability and Progression (LEAP) suite of qualifications.

Anne Budd, one of the tree recipients said:

"The Hamstead Marshall Wildlife Group would like to thank Greenham Trust for the trees that they have given us. The trees will be planted in the village field next to the Hamstead Marshall Village Hall.

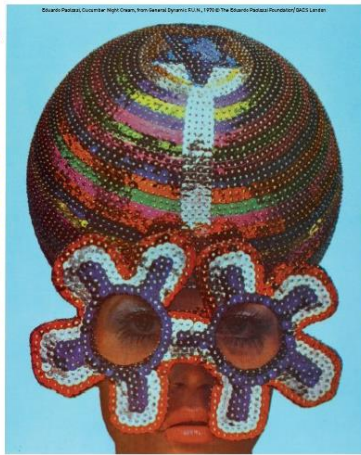
The planting will be seen and enjoyed by the community for many years to come, providing a positive environmental impact provided by this scheme."

Local resident Sarah Ward added:

"After the isolation felt by many during the pandemic, getting together as a village to do the tree planting was really quite special. We had a fantastic turn-out".

If you know of any charitable organisations who would like to benefit from this scheme please look at our website: greenhamtrust.com/trees and click on the button to "register interest". We will then be in touch in July when we shall be inviting applications for trees to be delivered in the Autumn.

EDUARDO PAOLOZZI: GENERAL DYNAMIC F.U.N.



Fifty screen-prints from the master of pop art

SAT 11 JUN – SUN 24 JUL

Eduardo Paolozzi: GENERAL DYNAMIC F.U.N.

Inject a blast of colour into your lunchbreak and head over to The Base's gallery to see this new exhibition! Featuring fifty screen-prints by the pioneer of pop art, Sir Eduardo Paolozzi, GENERAL DYNAMIC F.U.N. comes to The Base from the Hayward Gallery at the Southbank Centre London this summer.

This bold and bright exhibition explores Paolozzi's fascination with transforming the mundane into stunning graphic masterpieces.

Not to be missed!

Sat 11th June – Sunday 24th July

Open Wed – Sun, 10am -5pm

Also coming up this summer...

[The World of Peter Rabbit™ Storytime Trail](#)

Sat 30th July – Sunday 25th September

Plus a few of the many [workshops and courses](#) coming soon to The Base...

[Life Drawing](#) (5 week course)

Wednesdays/Fridays, 6pm – 8pm | Starting 8th/10th June

[Landscapes in Glass workshop](#)

Sunday 12th June, 11am – 5pm

[Make a Willow Basket workshop](#)

Sunday 19th June, 10am – 5pm





It would be hard to miss the development underway behind The Base fronting Communications Drive and Jones Drive.

The plot has remained barren for many years and changed hands on no less than three occasions, with various schemes proposed from a data centre to a small estate of industrial units, that were never built.

Those with very long memories might even remember the legacy buildings built by the Americans on the site, one of which was converted to become a local night club 'Gush'.



The latest purchaser Ashford Developments bought the site in 2021 with the strategy to develop under our Local Development Order as quickly as possible.

They have now secured planning permission for two large distribution warehouses. Details of their scheme can be found at [A34 Connect](#), but those who frequent The Base or simply glance left as they enter the business park will see the huge progress that is being made on the groundworks.

Ashford Developments are hoping to complete the scheme before the end of this year.



Plot 92

Fronting Main Street and Third Street East, Plot 92 has provided overflow parking for many years but is shortly to be developed into a 33,000 sq ft industrial unit.

The Trust has submitted planning for the development and will soon put the work out to tender.

There is already keen interest from two potential occupiers due to a lack of industrial supply at the moment. We hope to commence development later this summer with a view to finishing around 12 months later.



